

Johann Sebastien
BACH
(1685-1750)

PRELUDE

EN RE MINEUR BWV 999

d'après l'original pour luth

Arrangement pour guitare de Jean François Delcamp

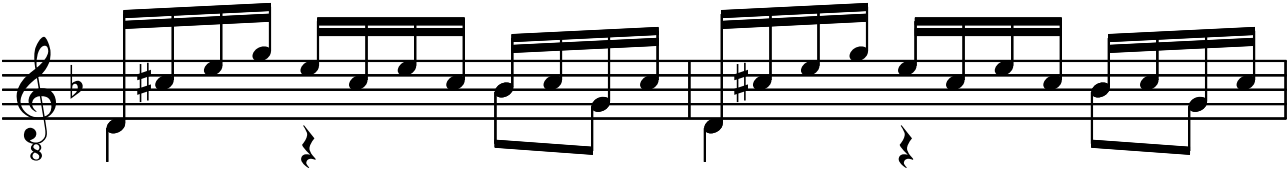
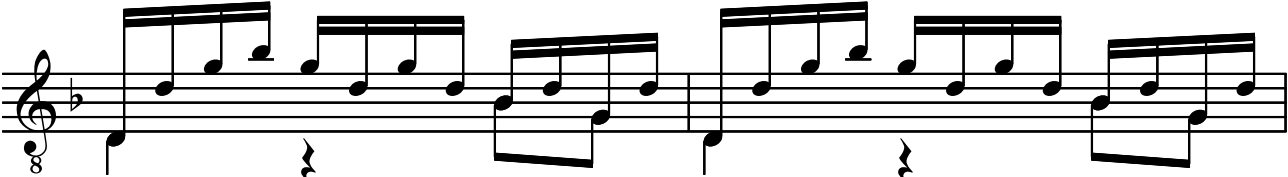
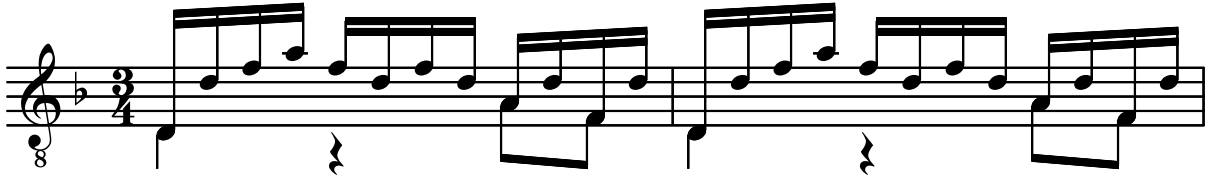
Jean François DELCAMP
224, rue Jean Jaurès - 29200 BREST
FRANCE www.delcamp.net

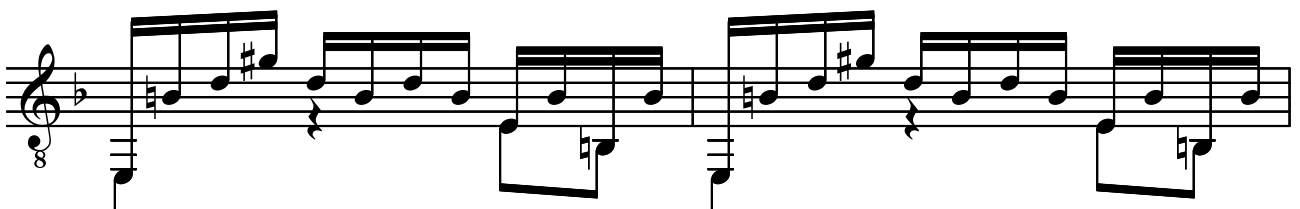
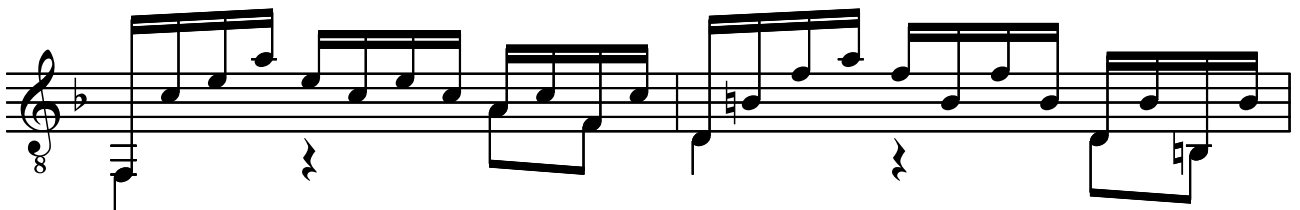
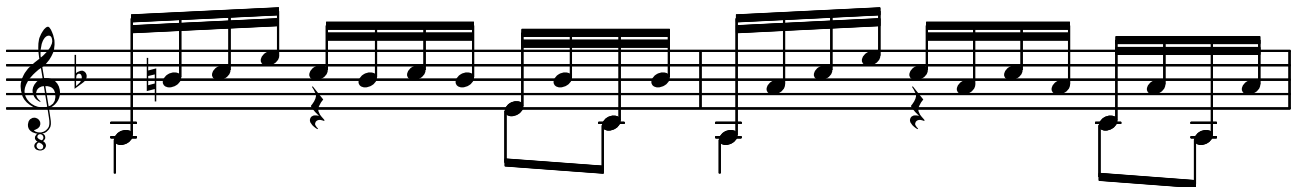
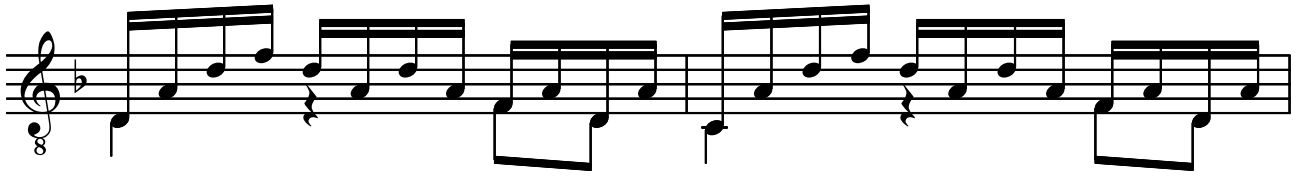
Johann Sebastien BACH (1685-1750)

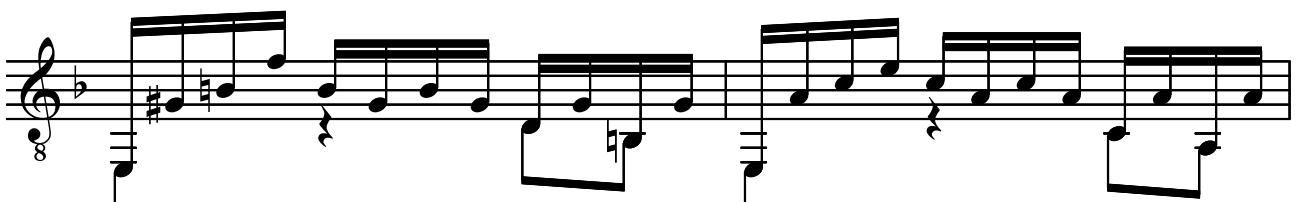
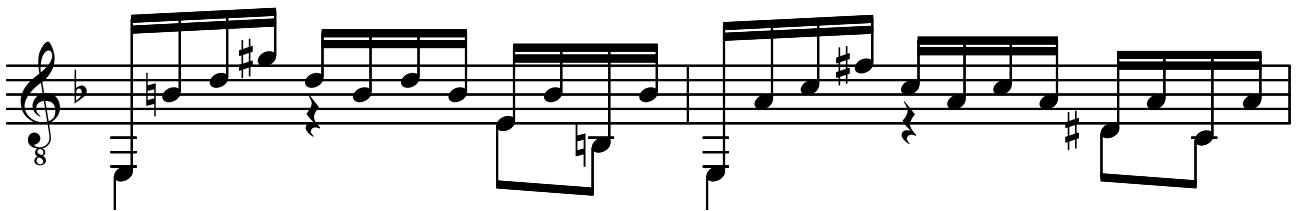
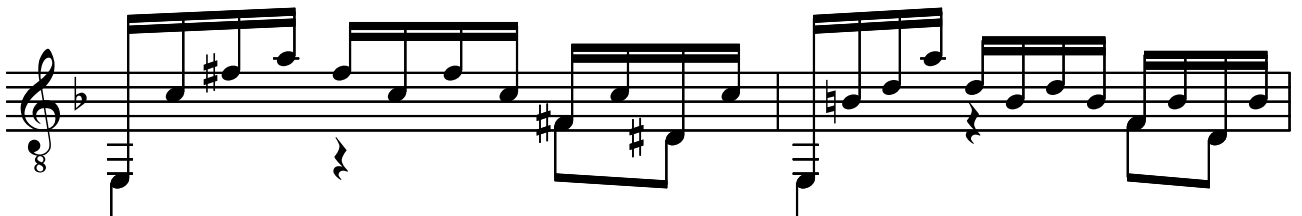
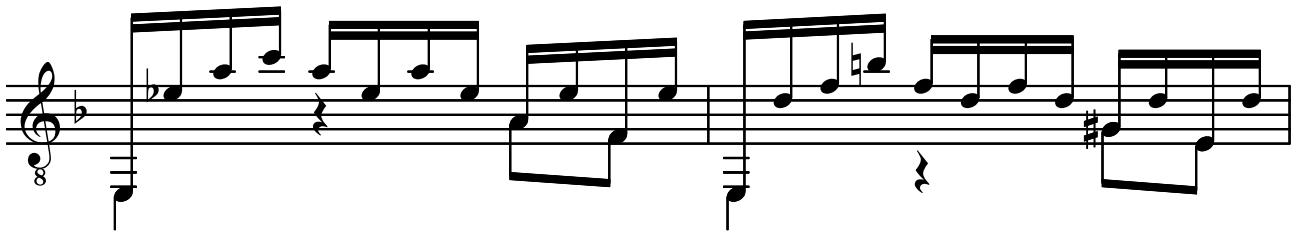
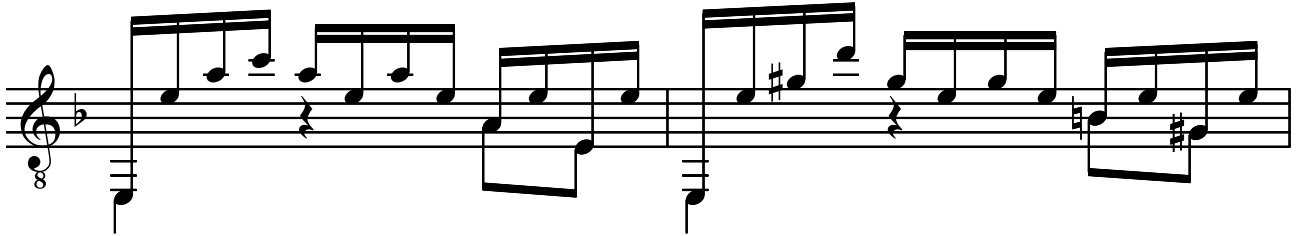
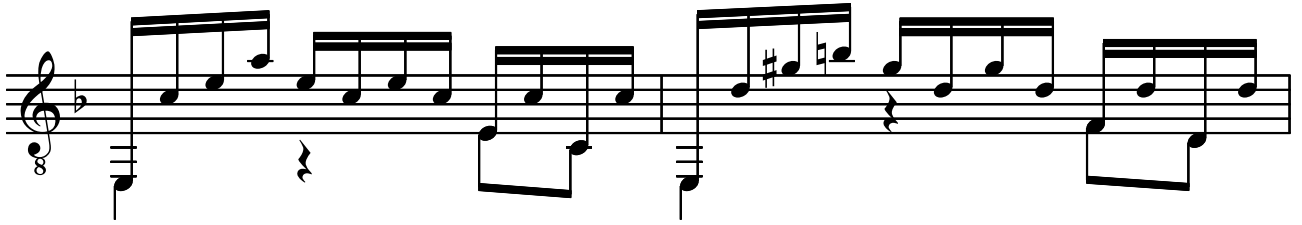
PRELUDE EN RE MINEUR BWV 999

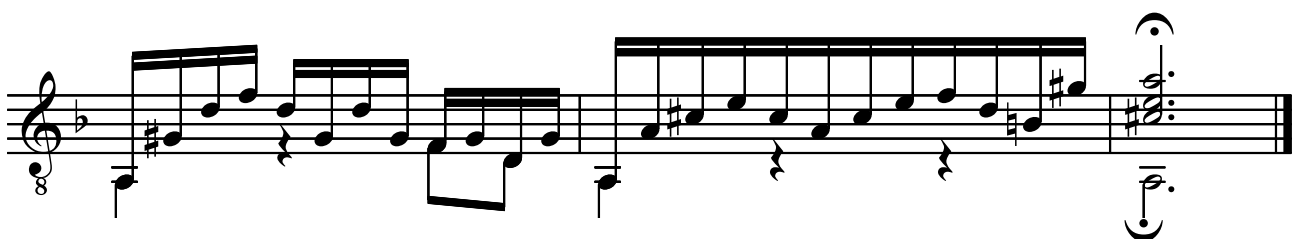
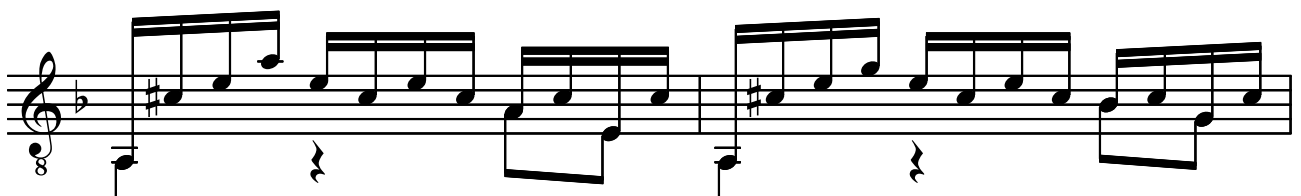
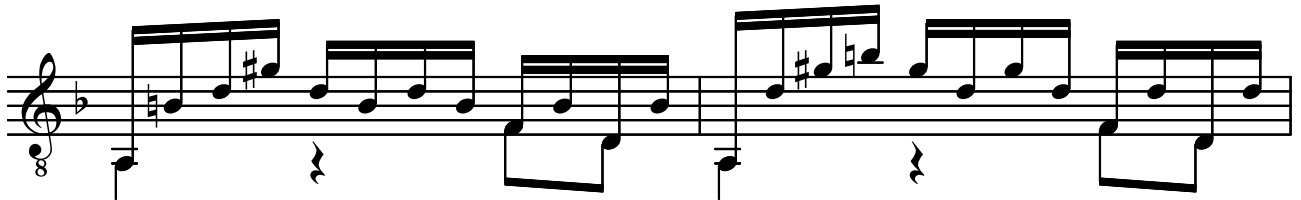
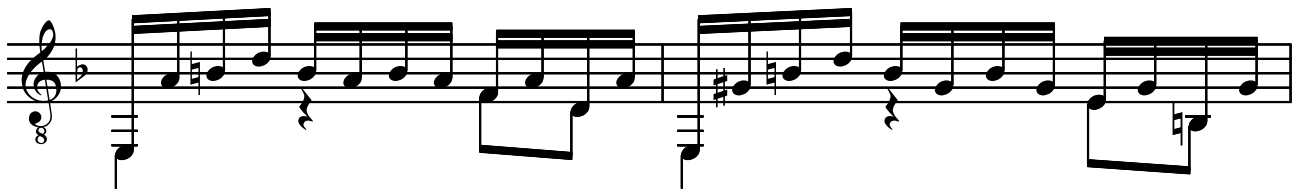
d'après l'original pour luth

Arrangement pour guitare
de Jean François Delcamp









This document was created with Win2PDF available at <http://www.daneprairie.com>.
The unregistered version of Win2PDF is for evaluation or non-commercial use only.